



SOUTH EAST FOREST RESCUE

<http://www.myspace.com/southeastforestrescue>
PO BOX 899 Moruya, NSW, 2537
fastigata@hotmail.com sefr@fastmail.fm

OEH Enviroline

25/7/11

Dear OEH,

Re: Buckenbowra State Forest compartments 533 & 534

We write to report RFA, IFOA and Threatened Species Licence logging breaches in the abovementioned state forest compartments. GPS unit was set at AGD format.

BREACH 1: TSL 2.1.c & d, and 5.4.

2.1 General

- c) All specified forestry activities and miscellaneous forestry operations must be conducted in accordance with the conditions of this licence.
- d) All specified forestry activities and miscellaneous forestry operations to which this licence applies must be carried out in a competent and reasonable manner.

5.4 Rainforest

- a) At the time of harvest planning, all known locations of Rainforest and exclusion zones to be established around Warm Temperate and Cool Temperate Rainforest, must be shown on the harvesting plan operational map.
(Note: known locations of Rainforest must include CRAFTI rainforest.)
- b) The on ground identification and location of Rainforest and exclusion zones established around Warm Temperate and Cool Temperate Rainforest, must be undertaken before or during prelogging mark-up.
- c) The location of all Rainforest and exclusion zones established around Warm Temperate and Cool Temperate Rainforest identified in accordance with condition 5.4 b) must be shown on a map at the same scale as the harvesting plan operational map and included in the compartment history planning documentation.
- d) A 20 metre wide exclusion zone must be implemented around all areas of Warm Temperate Rainforest and Cool Temperate Rainforest.

The first area inspected was adjacent and to the east of Dump 1 on the Operational Map, following a snig track that ran easterly downhill towards the mapped Rocky Outcrop.
The logged area ended at about 0232490/6048498 and was before encroaching on the mapped Rocky Outcrop. It became apparent though during the transect that there had been damage to unmapped rainforest communities. These rainforest elements such as tree ferns, cabbage tree palms, sassafras etc should have been protected from disturbance.

BREACH 2: TSL 2.1.c & d, 3.c, and 5.2.

3 Planning Documentation

- c) The Harvesting or Operational Plan must contain the Site-specific Conditions relevant to the area of operations as approved by and provided in writing by NPWS (as per Condition 1.2 of this licence).

5.2 Compartment Mark-up Surveys

- a) An adequately trained person must conduct a thorough search for, record and appropriately mark the following threatened and protected species features during the marking-up of a compartment.
 - v. Latrine and den sites of the Spotted-tailed Quoll;
 - vi. Distinctive scats (e.g. Spotted-tailed Quoll, Koala);
- b) Searches for threatened species features must be conducted within that portion of the net logging

area where harvesting will occur, and within 50 metres outside this area.

c) Harvesting operations are prohibited in areas which have not been subject to compartment markup surveys.

d) Where any of these features are found, the feature must be recorded, the Harvesting Plan (including the Operational Map) must be amended accordingly and the appropriate Condition applied.

A possible Spotted-tailed Quoll scat located on snig track running off Dump 1 at 0232173/6048728. The harvest plan notes records nearby but not within the compartments. We contend that FNSW surveying is inadequate.



BREACH 3: TSL 2.1.c & d, and 5.6.g.ii.

5.6 Tree Retention

The following condition must be applied within the non-regrowth zone:

g) Protection of retained trees

i. When conducting specified forestry activities and post-logging burning, damage to trees retained under conditions 5.6 a), 5.6 b), 5.6 c), 5.6 d), 5.6 e) and 5.6 f) of this licence must be minimised to the greatest extent practicable. During harvesting operations, the potential for damage to these trees must be minimised by utilising techniques of directional felling.

ii. In the course of conducting specified forestry activities, logging debris must not, to the greatest extent practicable, be allowed to accumulate within five metres of a retained hollow-bearing tree, recruitment tree, stag, Allocasuarina with more than 30 crushed cones beneath, eucalypt feed tree, or Yellow-bellied Glider or Squirrel Glider sap feed tree.

Logging debris within a five metres radius of retained trees must be removed or flattened to a height of less than one metre. Mechanical disturbance to ground and understorey must be minimised to the greatest extent practicable within this five metres radius.

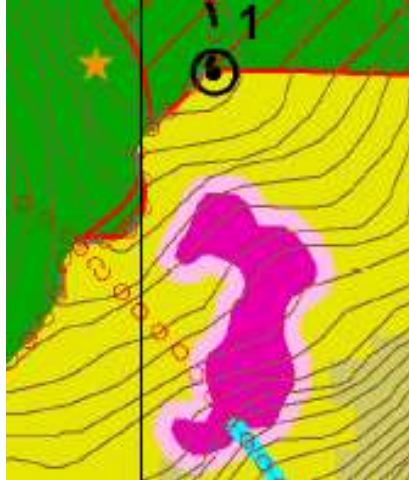
Habitat and recruitment trees must not be used as bumper trees during harvesting operations.

It was discovered that there is a H Tree with debris and no obvious hollows directly adjacent to Dump 1.



BREACH 4: TSL 2.1.c & d, and 5.4.

South of Dump 1 is a patch of mapped rainforest that is marked without the requisite 20 metre buffer and has consequently suffered logging damage contrary to TSL condition 5.4.



BREACH 5: TSL 2.1.c & d, 5.11.

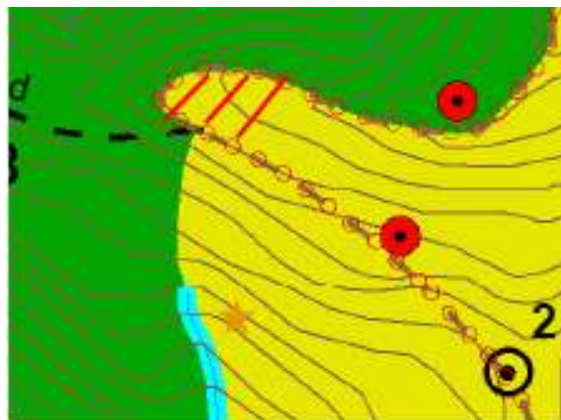
5.11 Rocky Outcrops and Cliffs

a) Specified forestry activities are prohibited within areas of rocky outcrops and cliffs.

b) In addition, exclusion zones of at least 20 metres wide must be implemented around all rocky outcrops more than 0.1 hectare (approx. 30m x 30m), and all cliffs.

(Note: it is not intended to exclude SFNSW from all areas that have a scattered or stony or rocky ground cover, only those areas where rocks and exposed boulders cover greater than 70% of at least a 0.1 hectare area. Those areas that fall within the definition of Rocky Outcrops and Cliffs are considered to contain likely habitat for threatened flora and fauna.)

At the western extremity of the logging area we contend there to be a logged unmapped Rocky Outcrop. The area in the map section below with red lines through is the general vicinity. The logged outcrop meet the definition in extent and greater than 70% coverage. There has been no exclusion zone implemented for this rocky outcrop.



BREACH 6: TSL 2.1.c & d, and 5.6.g.i.

During harvesting operations, the potential for damage to these trees must be minimised by utilising techniques of directional felling.

A headless H tree is located at 0231740/6048271.



BREACH 7: TSL 2.1.c & d, and 5.4.

More unmapped rainforest damage at 0231959/6048100 and at 0231976/6048086.



BREACH 8: IFOA.

We would contend also that there are evident canopy retention issues within the logged area, but realise that FNSW would argue that over the tract there has been 50% or more canopy retained.

Once again we find that an area of native forest that should have been included in the CAR reserve, had the RFA been conducted in good faith, has been given the woodchip treatment. The rainforest aspects of this logged zone give all the more reason for concern that this area of nationally significant high conservation value forest ecosystem has been severely damaged for many years to come.

We request regulatory action on this matter.

Kind Regards,

L Stone

A handwritten signature in blue ink, appearing to read "S. Daines".

S. Daines